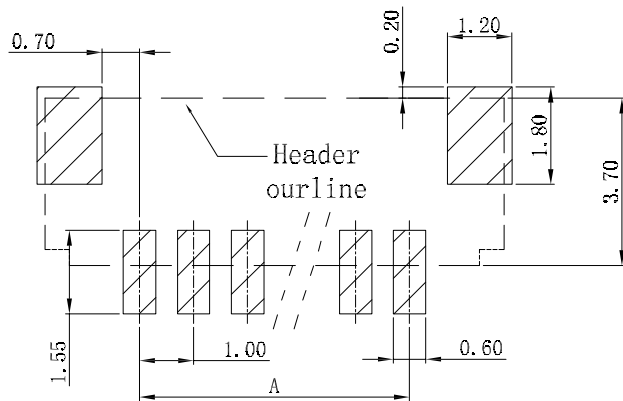
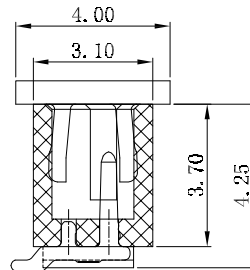
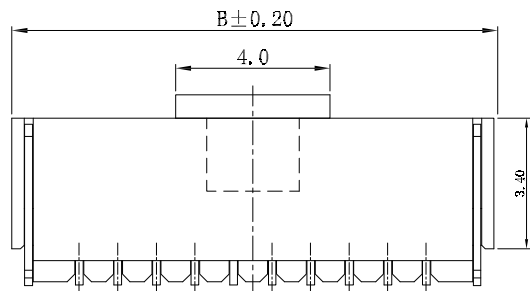


Assembly Layout



P. C. B LAYOUT

Specifications:

Current Rating: 1.0A AC/DC
 Voltage rating: 50V AC/DC
 Temperature range: -25°C to +85°C
 Contact resistance: 20mΩ max.
 Insulation resistance: 100MΩ min.
 Withstand voltage: 500V AC/minute
 Package: tap & reel

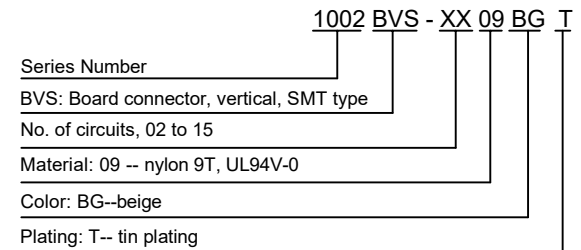
Material:

Housing: nylon 9T, UL94V-0, beige
 PIN: phosphor bronze
 Solder tab: phosphor bronze

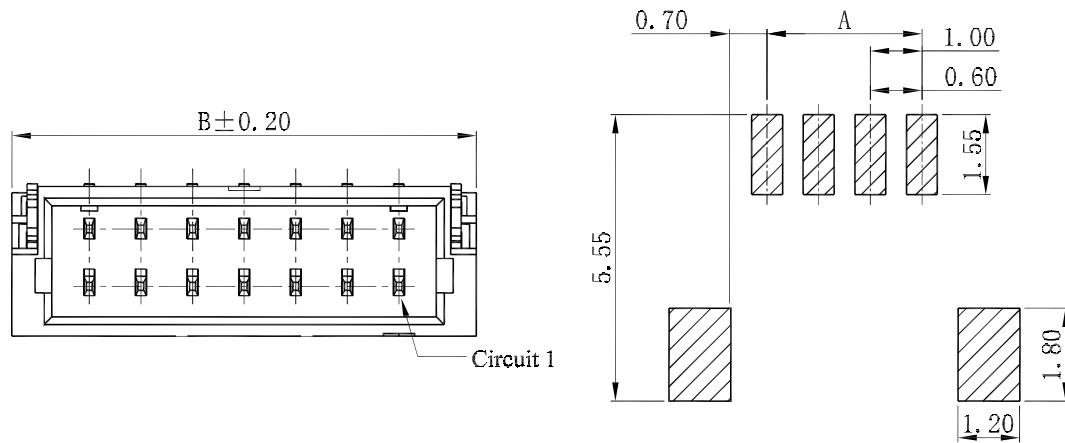
Circuits	Dimensions (mm)	
	A	B
2	1.00	4.50
3	2.00	5.50
4	3.00	6.50
5	4.00	7.50
6	5.00	8.50
7	6.00	9.50
8	7.00	10.50
9	8.00	11.50
10	9.00	12.50
11	10.00	13.50
12	11.00	14.50
13	12.00	15.50
14	13.00	16.50
15	14.00	17.50

Mates with: 1002W (female housing)
 1002WF (female housing, with flange)

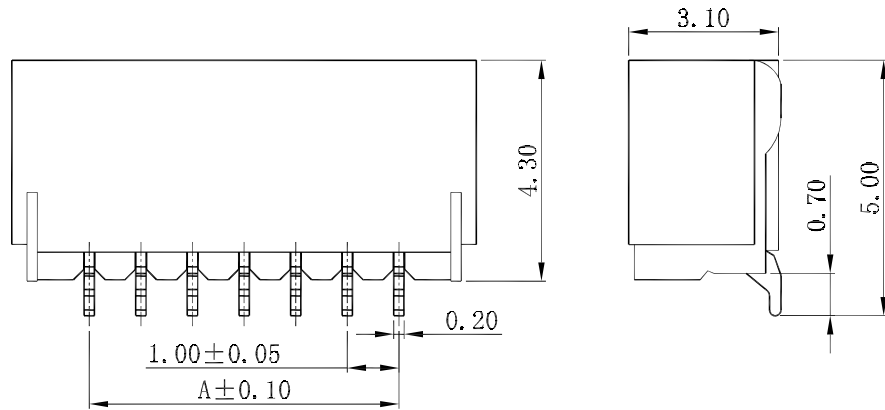
Part Number Information:



						General Tolerance	Zeakka Electronics				Document No.: ZK-1251BVS			
						.X ±0.3					Title: HEADER, VERTICAL, SMT TYPE, SINGLE ROW, 1.25MM PITCH, TIN			
						.XX ±0.2	APPR	CH'K	DRWN	Date	Dimensions	Scale	Version	
Date	Version	EC No.	Description	DRWN	CH'K	APPR	THIRD ANGLE PROJECTION	Kai Lee	Cris Wang	Jun Wei	2020.8.7	mm	1:1	A



PCB LAYOUT



Specifications:

Current Rating: 1.0A AC/DC
 Voltage rating: 50V AC/DC
 Temperature range: -25°C to +85°C
 Contact resistance: 20mΩ max.
 Insulation resistance: 100MΩ min.
 Withstand voltage: 500V AC/minute
 Package: tap & reel

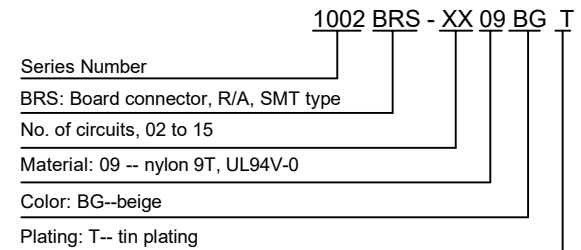
Material:

Housing: nylon 9T, UL94V-0, beige
 PIN: phosphor bronze
 Solder tab: phosphor bronze

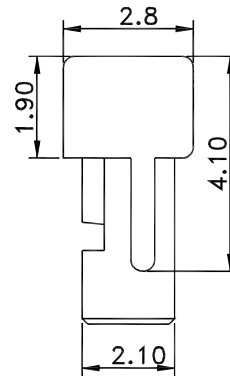
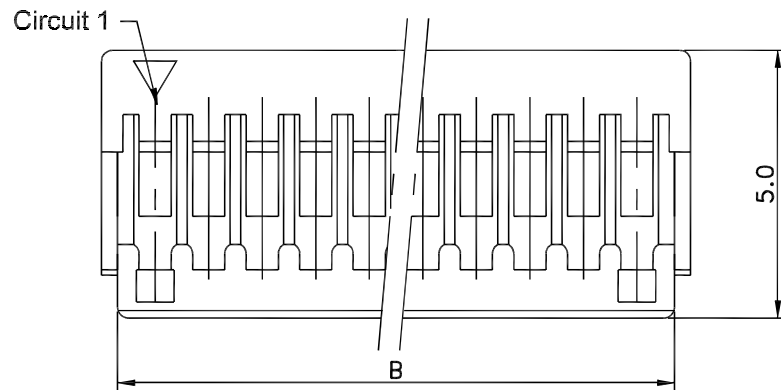
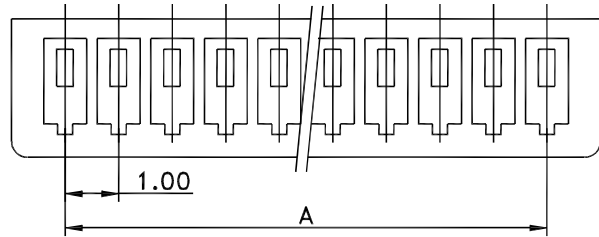
Circuits	Dimensions (mm)	
	A	B
2	1.00	4.50
3	2.00	5.50
4	3.00	6.50
5	4.00	7.50
6	5.00	8.50
7	6.00	9.50
8	7.00	10.50
9	8.00	11.50
10	9.00	12.50
11	10.00	13.50
12	11.00	14.50
13	12.00	15.50
14	13.00	16.50
15	14.00	17.50

Mates with: 1002W (female housing)
 1002WF (female housing, with flange)

Part Number Information:



							General Tolerance	Zeakka Electronics				Document No.: ZK-1002BRS		
							.X ±0.3					Title: HEADER, R/A, SMT TYPE, SINGLE ROW, 1.0MM PITCH, TIN		
							.XX ±0.2	APPR	CH'K	DRWN	Date	Dimensions	Scale	Version
Date	Version	EC No.	Description	DRWN	CH'K	APPR	.XXX ±0.1	Kai Lee	Cris Wang	Jun Wei	2020.8.7	mm	1:1	A
							THIRD ANGLE PROJECTION							



Circuits	Dimensions (mm)	
	A	B
2	1.00	2.40
3	2.00	3.40
4	3.00	4.40
5	4.00	5.40
6	5.00	6.40
7	6.00	7.40
8	7.00	8.40
9	8.00	9.40
10	9.00	10.40
11	10.00	11.40
12	11.00	12.40
13	12.00	13.40
14	13.00	14.40
15	14.00	15.40

Specifications:

Current Rating: 1.0A AC/DC
 Voltage rating: 50V AC/DC
 Temperature range: -25°C to +85°C
 Contact resistance: 20mΩ max.
 Insulation resistance: 100MΩ min.
 Withstand voltage: 500V AC/minute

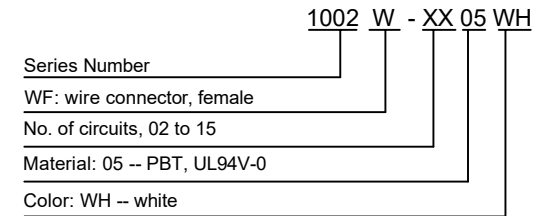
Material:

Housing: PBT, UL94V-0, white

Mates with: 1002BVS (header, vertical, SMT type)
 1002BRS (header, R/A, SMT type)

Used with: 1002TF-PX (female terminal)

Part Number Information:



							General Tolerance	Zeakka Electronics				Document No.: ZK-1002W		
							.X ±0.3					Title: HOUSING, FEMALE, CRIMP TYPE, SINGLE ROW, 1.0MM PITCH		
							.XX ±0.2	APPR	CH'K	DRWN	Date	Dimensions	Scale	Version
Date	Version	EC No.	Description	DRWN	CH'K	APPR	.XXX ±0.1	Kai Lee	Cris Wang	Jun Wei	2020.8.7	mm	1:1	A
							THIRD ANGLE PROJECTION							

